



Forget Data Roaming

Rent an Overseas Travel WiFi



TAIWAN
ss\$5 /Day
U.P. \$12/Day

JAPAN
ss\$7 /Day
U.P. \$12/Day



ss\$9 /Day
U.P. \$12/Day

China
Hong Kong
South Korea

ss\$11 /Day
U.P. \$12/Day

Australia
USA
Philippines
Malaysia
Thailand

ss\$17 /Day
U.P. \$25/Day

Europe

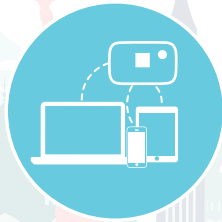
 Visit www.changiwifi.com

The Need To Stay Online

Wi-Fi access for your travels



**24 Hours Convenient
Collection & Return**



**Supports
Multiple Devices**



**Overseas Internet Access
Anytime, Anywhere**



Pocket size



Secured Network

Daily Limit

Unlimited

- Philippines
- Taiwan
- Japan

Not Applicable

Daily Limit

400mb

- Australia
- South Korea
- Europe
- Hong Kong
- Thailand

Network Slows Down

- USA
- China
- Malaysia

Network will be suspended after 24 hours
Network deactivated after 2nd suspension

Network deactivates

- Terminal 1
Arrival Hall, Level 1
(Beside Starbucks)
- Terminal 1
Departure Transit,
Level 2 (Beside Omega Boutique)
- Terminal 2
Departure Hall, Level 2
(Opp. Row 10)
Arrival Hall, Level 1 (Opp. Belt 34)
- Terminal 3
Arrival Hall, Level 1 (Opp. Belt 42)

Fair Usage Policy

Renters are advised to take note of the data limit capped by the Internet Service Provider (ISP) Fair Usage Policy (FUP) in each country. The Internet Service Providers (ISP) implements a data limit to the user when a channel becomes overload and this limit varies in different countries, depending on their policy regulations. The user may experience either slow data speed, temporarily idle for a period of time, if the data usage exceeded the assigned limit. The excess data will not incur additional cost on your rental rates.



wifi@changirec.com
Office hours 9am - 6pm, Mon - Fri
(Singapore Time Zone, UTC+08:00)



General & Technical Enquiry
+65 6701 1185
24 hours Daily



+65 9427 6977
24 hours Daily



@ChangiRecommends